

Data Exposure & Analytics

Henrik Weimer



GLOBAL PRODUCT DATA INTEROPERABILITY **SUMMIT** 2016



Biography

Global Product Data Interoperability Summit | 2016



Henrik Weimer

Senior Manager, AIRBUS
PLM Strategy, Architecture, and Business Plan

International IT executive with more than 20 years of program and project management experience in the aerospace & defense, automotive, petrochemical, medical, and technology industries.

Change leader with expertise in large PLM transformation programs. Experience in worldwide & regional operations, both off-shore and on-shore outsourcing.

Creative and innovative strategic thinker. At ease in a complex international context spanning borders and cultures. Focus on human relationships with strong leadership and people skills.

We are part of Airbus Group

AIRBUS
GROUP

136,000+
Total workforce

€1,006billion
Order book

€64.4billion
Annual revenue

 **AIRBUS**



 **AIRBUS**
HELICOPTERS



 **AIRBUS**
DEFENCE & SPACE



The most global aerospace player – close to our customers worldwide

The numbers

- 11 Production sites
- 4 Assembly line locations
- 5 Training centres
- 4 Engineering centres
- 3 Customer support centres
- 10 Materials & logistics centres*

*Satair Group

Delivering value for airlines and enabling people to connect



OEM Context

Global Product Data Interoperability Summit | 2016



+450K

+180K

+26 K

+11K

+1,4K

Catalog Options

Engineering Changes

Assemblies

Design Solutions

Specific Parts



Data Exposure & Analytics

Global Product Data Interoperability Summit | 2016

DATA
is the new



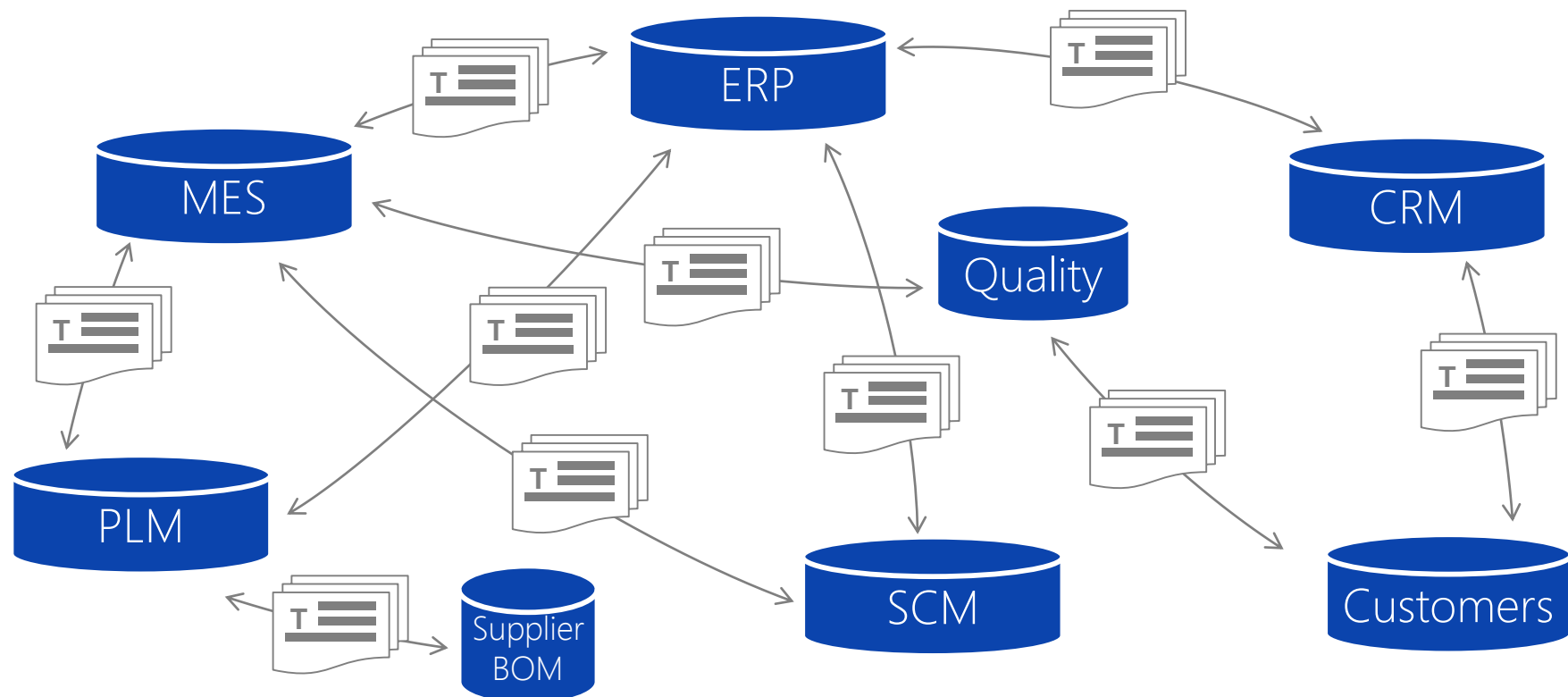
OIL

Challenges to Reach End-to-End Data Exposure

Global Product Data Interoperability Summit | 2016

Data assets spread across various specific process areas

➤ Disconnected Silos



Challenges to Reach End-to-End Data Exposure

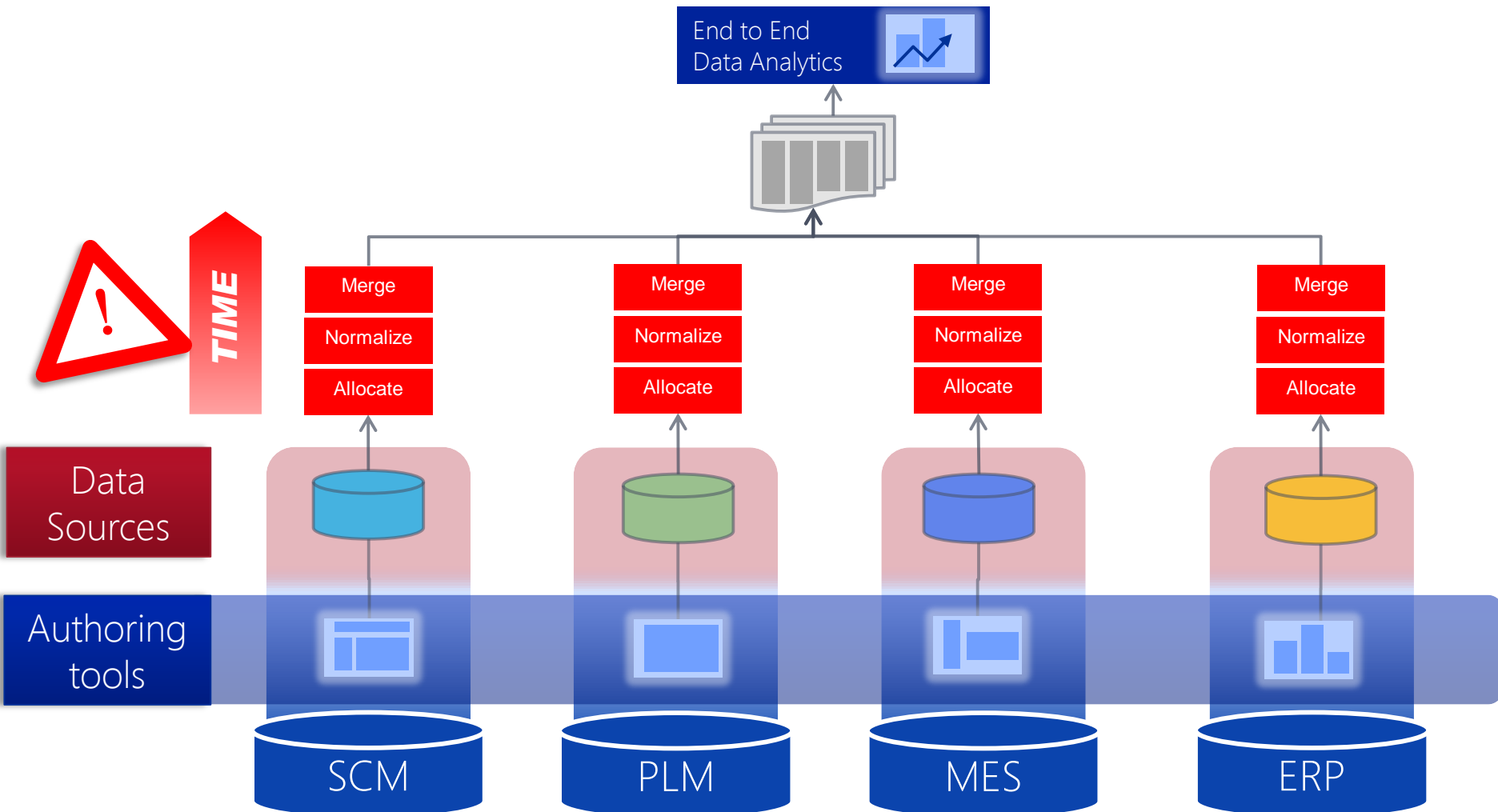
Global Product Data Interoperability Summit | 2016

Data assets locked into **proprietary solutions & Data Formats**



Challenges to Reach End-to-End Data Exposure

Global Product Data Interoperability Summit | 2016



Challenges to Reach End-to-End Data Exposure

Global Product Data Interoperability Summit | 2016

Significant waste of time

Allocating data in various locations

- Disconnected Silos

Normalize data formats

- Proprietary formats

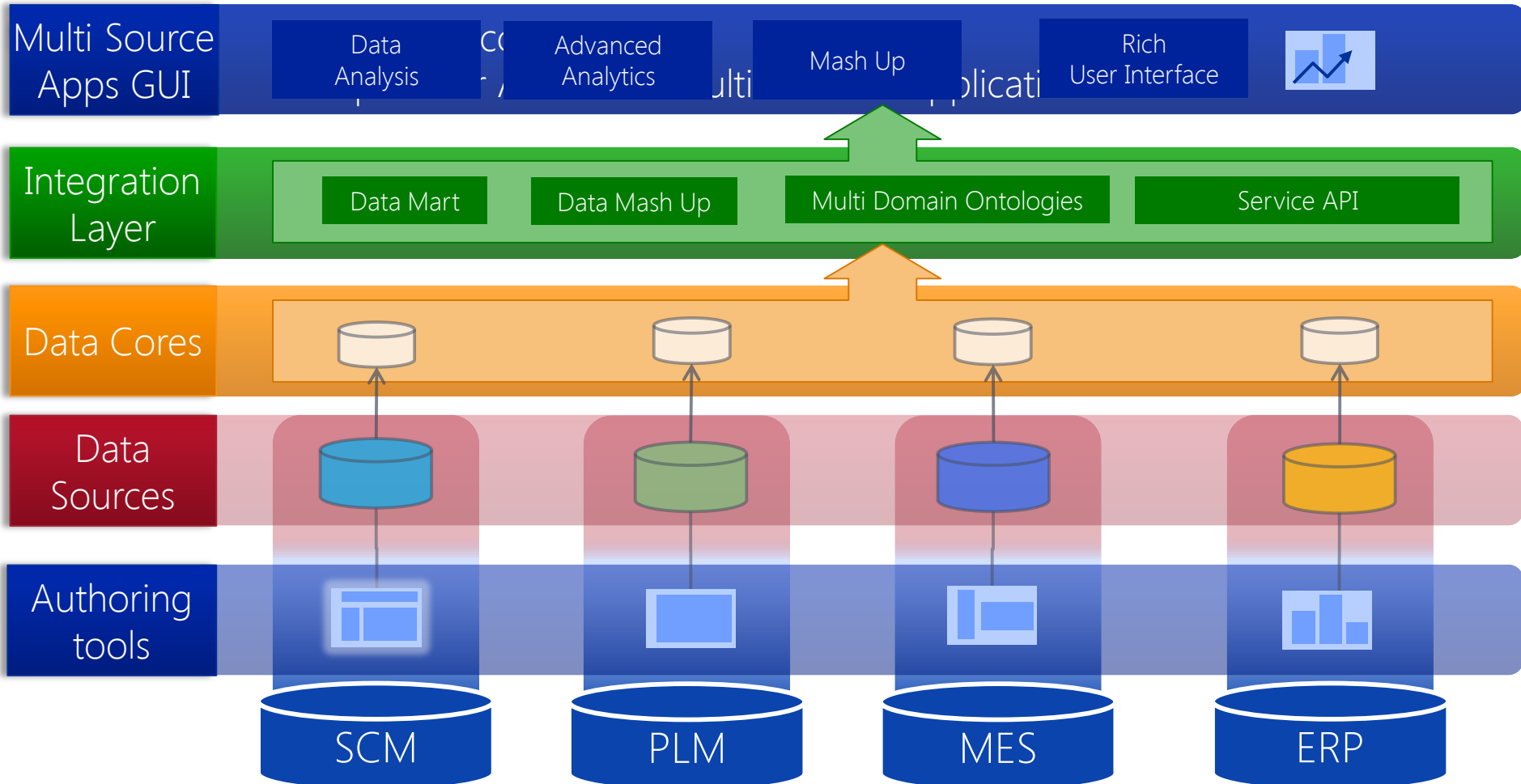
Clean the data content

- ➔ Out-of-date reports & KPI's
- ➔ Low speed of Innovation



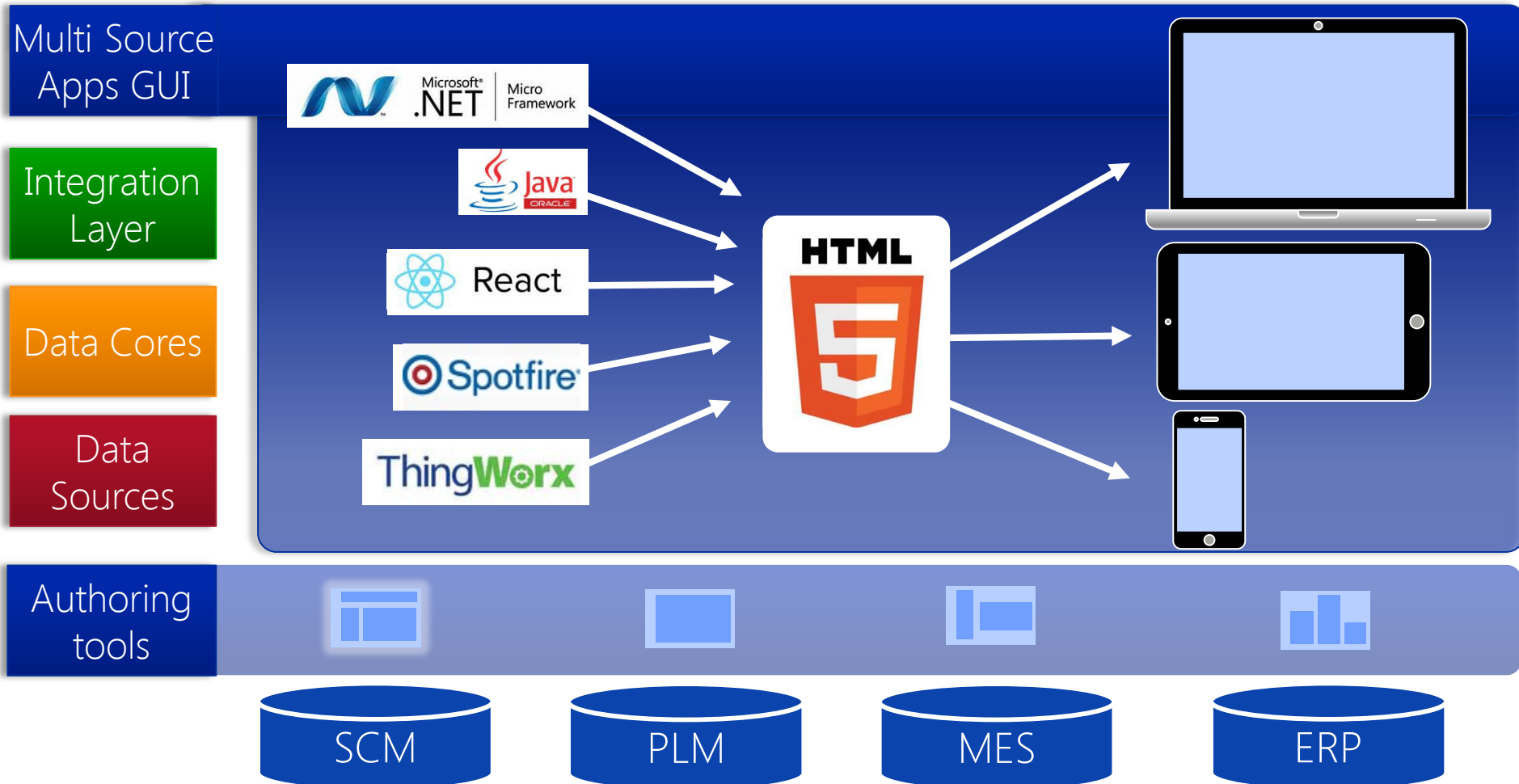
End-to-End Data Exposure Architecture

Global Product Data Interoperability Summit | 2016



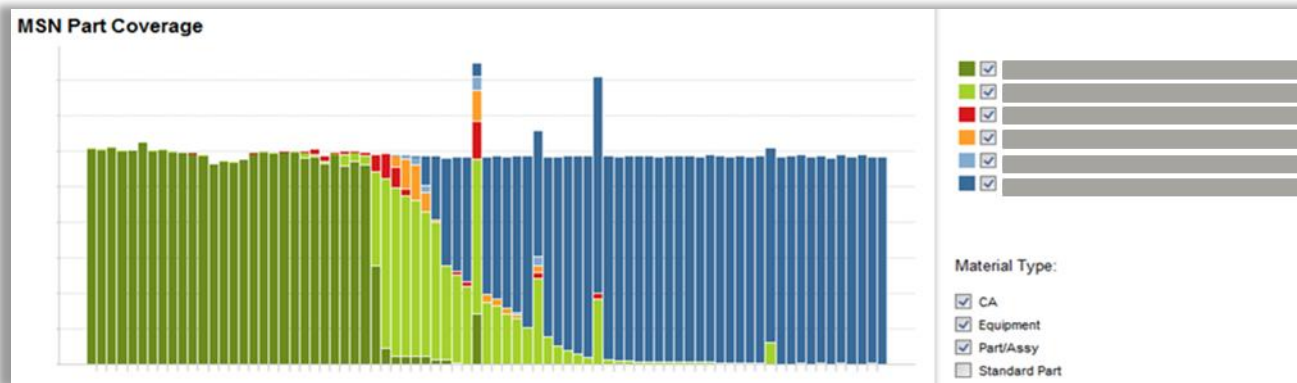
End-to-End Data Exposure Architecture

Global Product Data Interoperability Summit | 2016



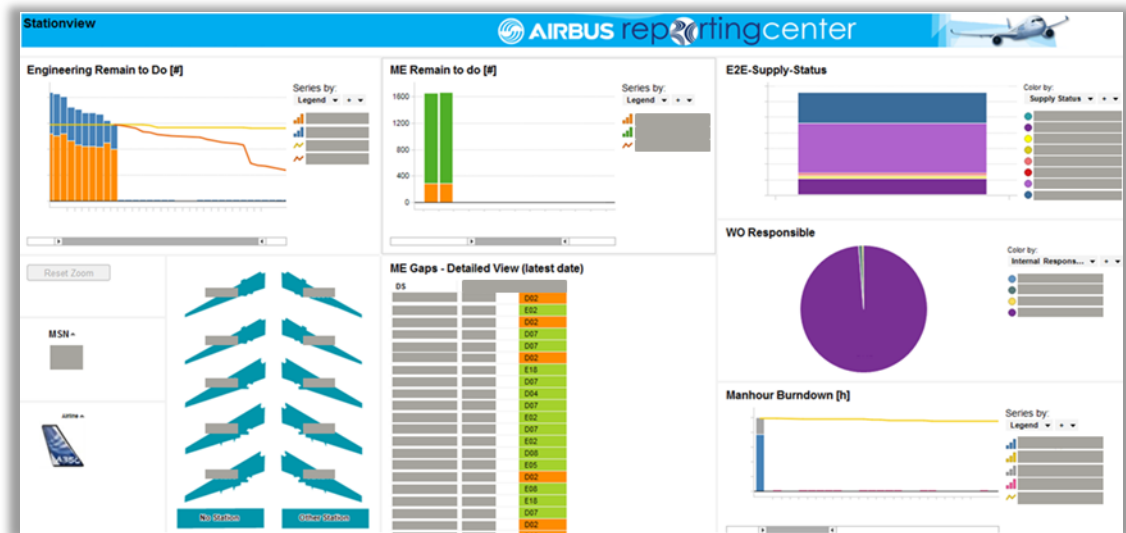
E2E Supply Status

Global Product Data Interoperability Summit | 2016



Prediction of upcoming manufacturing challenges:

- Enabling people to have the same view and act together

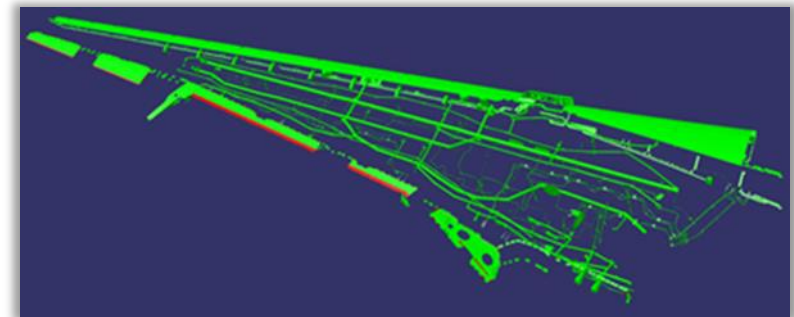
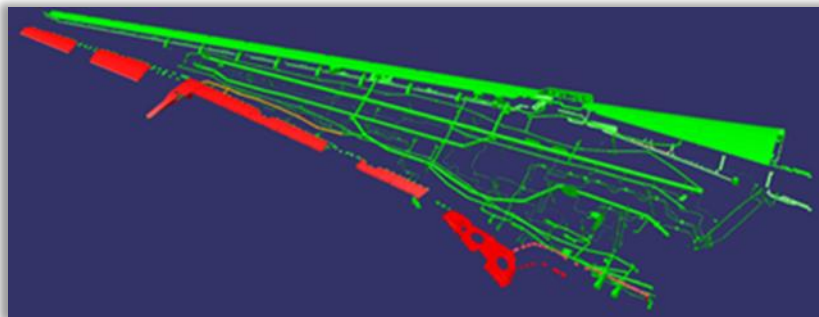
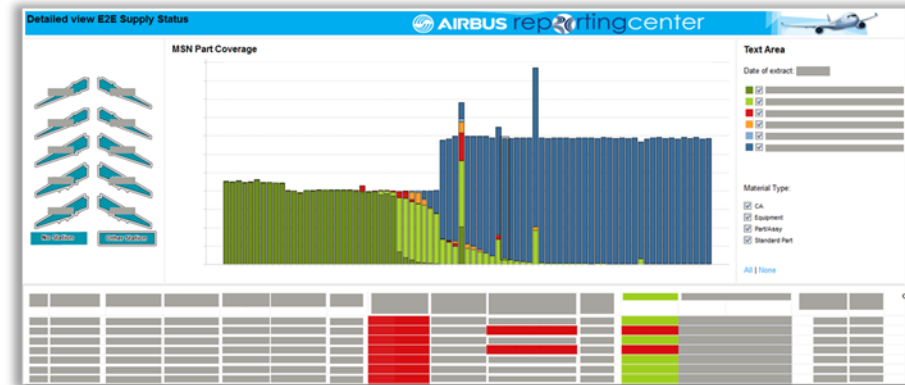


E2E Supply Status

Global Product Data Interoperability Summit | 2016

End 2 end reporting enables to follow the supply status of each parts thanks to charts and tables.

Possibility to enhance the Digital Mockup with status information.



Data Exposure Enables Powerful Applications

Global Product Data Interoperability Summit | 2016

Multi Source
Apps GUI

Integration
Layer

Data Lakes

Data
Sources

Authoring
tools



Business activity
monitoring &
business
intelligence

Data
Analysis



Visual
management
in 3D

Mash Up



Advanced
analytics

Advanced
Analytics



Mobile Enabled

Rich
User Interface



SCM



PLM



MES



ERP

Benefits for Tools & Technology

Global Product Data Interoperability Summit | 2016

- Cross program platform for smart solutions
- Unlocking the power of existing assets
- Single source of truth
- Scaling and re-use:
Building block technologies easy to replicate the benefit in other areas
- Enhanced DMU content enabler
Information visualization on context



Benefits for People

Global Product Data Interoperability Summit | 2016



- Data democratization
Everyone has access to the data, not only the experts
- Focus on progress instead of discussion on data quality
- Collective intelligence as people have the same information.

Global Product Data Interoperability Summit | 2016

